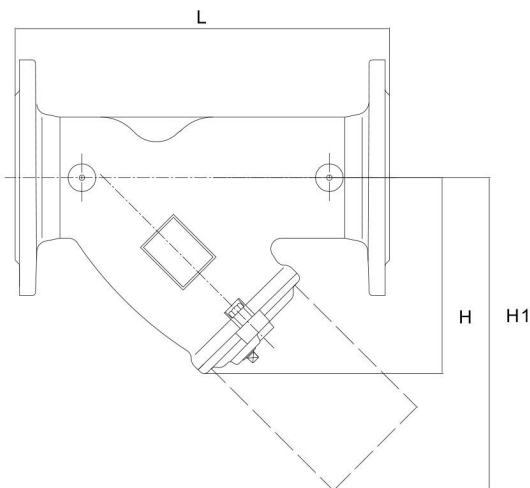
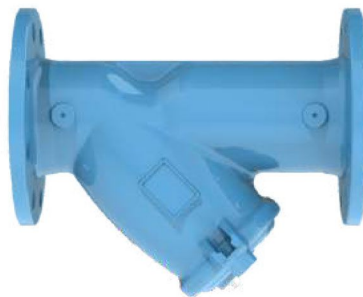


**Material List**

No.	Part Name	Material	Specification
1	Body	Ductile Iron	EN-JS 1050
2	Bonnet	Ductile Iron	EN-JS 1050
3	Screen	Stainless Steel 304	-
4	O-Ring	EPDM	-
5	Drain Plug	Stainless Steel 201	-
6	Bolt	Steel	-
7	Nut	Steel	-



**• Features**

1. Filter debris carried by the fluid in pipeline
2. Stainless Steel perforated screen inside
3. Machined test point plugs are available

**• Working Pressure**

16 Bar

**• Flange Connection**

ASME Class125/Class 150  
BSEN1092-2 PN10/PN16  
AS2129 Table D/Table E  
JISB2239 10K/16K

**• Coating**

Blue(RAL5015)/Black(RAL9005)/Grey(RAL7016)  
Customization Accepted

**Dimensions (mm)**

DN	50	65	80	100	125	150	200	250	300	350	400	450	500	600
Inch	2"	2-1/2"	3"	4"	5"	6"	8"	10"	12"	14"	16"	18"	20"	24"
H	110	135	155	190	255	290	335	428	470	625	686	746	845	984
H1	165	205	230	295	350	400	510	665	745	940	1230	1110	1550	1560
L	230	290	310	350	400	480	600	730	850	980	1100	1200	1250	1450

**Cv Value**

DN	50	65	80	100	125	150	200	250	300	350	400	450	500	600
Inch	2"	2-1/2"	3"	4"	5"	6"	8"	10"	12"	14"	16"	18"	20"	24"
CV	71.3	110.9	174.2	253.4	396	570.3	863.4	1711	2218	3168	4673.6	6178.7	7763.0	9505.7

Cv is the flow rate of water in US gallons per minute of 60°F water, which passes through the valve with 1psi pressure drop across the valve.