

Material List

No.	Part Name	Material	Specification
1	Body	Cast Iron	A 126 Class B
		Ductile Iron	A536 Gr.65-45-12
2	Disc	Ductile Iron	A536 Gr.65-45-12
		Stainless Steel	A351 CF8
		Stainless Steel	A351 CF8M
3	Shaft	Stainless Steel	A276 410
		Stainless Steel	A276 304
		Stainless Steel	A276 316
4	Seat	EPDM/NBR	-
5	Spring	Stainless Steel	A276 304
		Stainless Steel	A276 316
6	Gasket	PTFE	-
7	Lifting Ring*	Carbon Steel	-

*Lifting ring is only for valve of 8" and above.



• Features

1. Spring loaded dual-plate pattern
2. Vulcanized seat

• Face to Face Standard

DIN 3202 K3

• Working Pressure

16 Bar

• Flange Connection

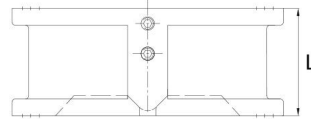
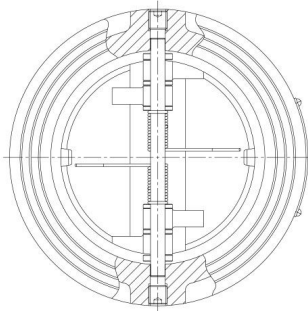
ASME Class125/Class 150
BSEN1092-2 PN10/PN16
AS2129 Table D/Table E
JISB2239 10K/16K

• Working Temperature

-20°C to 110°C (EPDM Seat)
-10°C to 80°C (NBR Seat)

• Coating

Blue(RAL5015)/Black(RAL9005)/Grey(RAL7016)
Customization Accepted



Dimensions (mm)

DN	50	65	80	100	125	150	200
Inch	2"	2-1/2"	3"	4"	5"	6"	8"
L	43	46	64	64	70	76	89
DN	250	300	350	400	450	500	600
Inch	10"	12"	14"	16"	18"	20"	24"
L	114	114	127	140	152	152	178

Cv Value

DN	50	65	80	100	125	150	200	250	300	350	400	450	500	600
Inch	2"	2-1/2"	3"	4"	5"	6"	8"	10"	12"	14"	16"	18"	20"	24"
Cv	79	120	226	404	695	1075	1920	3360	5320	6200	7650	9900	12700	19200

Cv is the flow rate of water in US gallons per minute of 60°F water, which passes through the valve with 1psi pressure drop across the valve.

Note: Information listed might be subject to change without notice due to continuing products development.