

Filter Drier Cores and Filters

System Protectors

R-410A

Universal replacement cores and filter cores for use in our ADKS and STAS shells and similar competitive Take-Apart type Filter Drier shells. May not be used for BTAS.



Features

- Water capacities to suit specific system conditions
- Exceptional acid capacities for normal system protection, or to effectively clean-up following a compressor burnout
- Activated carbon blend for soluble contaminant and wax removal (W-HH Series)

Nomenclature example: H 48

H	48
Series	Cubic Inch

Specifications

- Interchangeable with competitive products

NOTE: Filter Drier cores are suitable for use with R-11 AND R-123 but filters are NOT.

Ordering Information and Capacity Tables

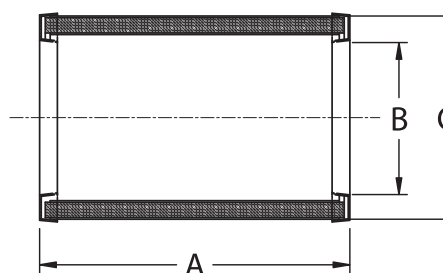
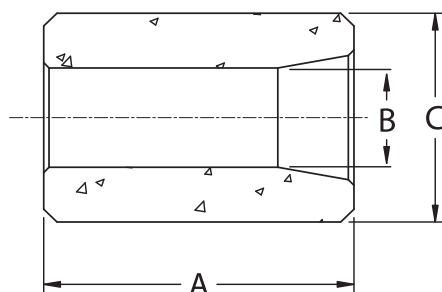
PCN	Description ³	Recommended Refrigerant Type	Function	Water Capacity ¹ Drops of Water ²													
				R-12		R-134a		R-22		R-407C		R-404A/R-507		R-410A		R-502	
				75°F	125°F	75°F	125°F	75°F	125°F	75°F	125°F	75°F	125°F	75°F	125°F	75°F	125°F
059541	D-48	CFC, HCFC	High Acid Removal	810	453	415	340	363	254	225	95	457	343	210	86	388	225
059542	H-48	CFC, HCFC	High Acid and Water Removal	1020	688	676	538	597	436	445	285	721	535	380	226	643	475
061235	W-48-HH	CFC, HCFC, HFC	Burnout Cleanup	772	488	387	294	335	226	290	165	417	289	249	130	444	306
061617	UK-48	CFC, HCFC, HFC	Universal Replacement	1579	1319	1272	1168	1181	1072	1033	786	1319	1241	976	707	1332	1150
089338	H-100	CFC, HCFC	High Acid and Water Removal	1958	1225	1112	834	962	673	726	418	1199	839	672	364	1109	758
062424	UK-100	CFC, HCFC, HFC	Universal Replacement	3204	2740	2769	2550	2574	2345	2182	1682	2868	2710	-	-	2787	2437
043582	W-100-HH	CFC, HCFC, HFC	Burnout Cleanup	1668	1054	1077	812	938	621	629	363	1162	792	573	307	960	663
089559	F-48	CFC, HCFC, HFC	Filter (Suction Only)	N/A													
047664	F-48R	CFC, HCFC, HFC	Filter (Suction Only) Reverse Flow	N/A													
095762	F-100	CFC, HCFC, HFC	Filter (Suction Only))	N/A													
061237	RH-48	CFC, HCFC	Removal	1020	688	1096	920	1037	790	750	530	1090	940	650	420	643	475
061238	RW-48	CFC, HCFC	Cleanup	772	488	583	493	532	380	380	230	600	482	350	197	444	306

¹ Water Capacities are based on:
Equilibrium Point Dryness (EPD) of:
50 parts per million for R-134a, R404-A/R-410A and R-407C
60 parts per million for R-22
15 parts per million for R-12

² 20 drops of water = 1 gram = 1 cc

³ D-42, H-42 and W-42 include one neoprene composite lid gasket and one core gasket. All other cores include a universal neoprene composite gasket kit which includes 2 sizes of replacement lid gaskets, and gaskets for the top and bottom of the core or filter.

Dimensional Data



Filter Drier Block Size	Dimensions			Weight (lbs)
	A	B	C	
42	6.00	1.58	3.12	1.00
48	5.50	1.77	3.72	1.50
100	6.50	2.06	4.81	4.00

Catalog Number	Dimensions			Weight (lbs)
	A	B	C	
F-48/F-48R	5.50	2.81	3.88	0.75
F-100	6.50	3.75	4.81	1.50